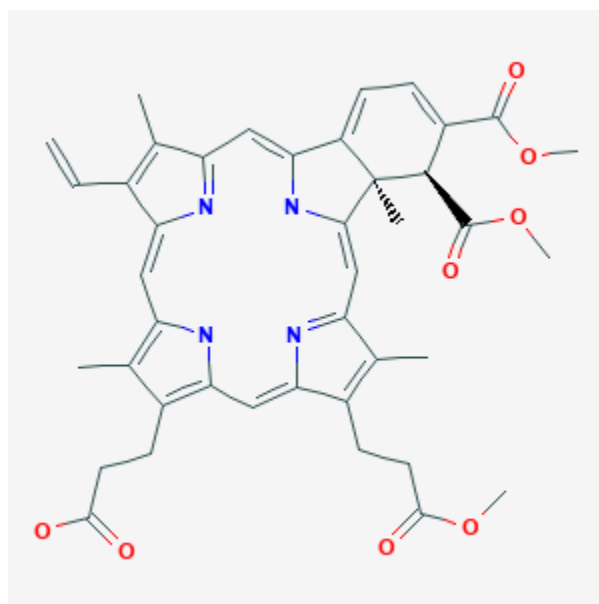




Verteporfin

Revised: December 3, 2018.

CASRN: 129497-78-5



Drug Levels and Effects

Summary of Use during Lactation

Limited information indicates that maternal verteporfin doses of 6 mg per square meter produce low levels in milk. Withholding breastfeeding for 24 to 48 hours after verteporfin administration should minimize risk to the breastfed infant.

Drug Levels

Maternal Levels. According to the manufacturer, verteporfin and its diacid metabolite were found in the breastmilk of one woman after a 6 mg per square meter IV infusion. The verteporfin levels in breastmilk were up

Disclaimer: Information presented in this database is not meant as a substitute for professional judgment. You should consult your healthcare provider for breastfeeding advice related to your particular situation. The U.S. government does not warrant or assume any liability or responsibility for the accuracy or completeness of the information on this Site.

Attribution Statement: LactMed is a registered trademark of the U.S. Department of Health and Human Services.

to 66% of the corresponding plasma levels and became unmeasurable (<2 mcg/L) within 24 hours. The diacid metabolite had lower peak breastmilk concentrations, but persisted up to at least 48 hours.

Infant Levels. Relevant published information was not found as of the revision date.

Effects in Breastfed Infants

Relevant published information was not found as of the revision date.

Effects on Lactation and Breastmilk

Relevant published information was not found as of the revision date.

Substance Identification

Substance Name

Verteporfin

CAS Registry Number

129497-78-5

Drug Class

Breast Feeding

Lactation

Porphyrins

Photosensitizing Agents