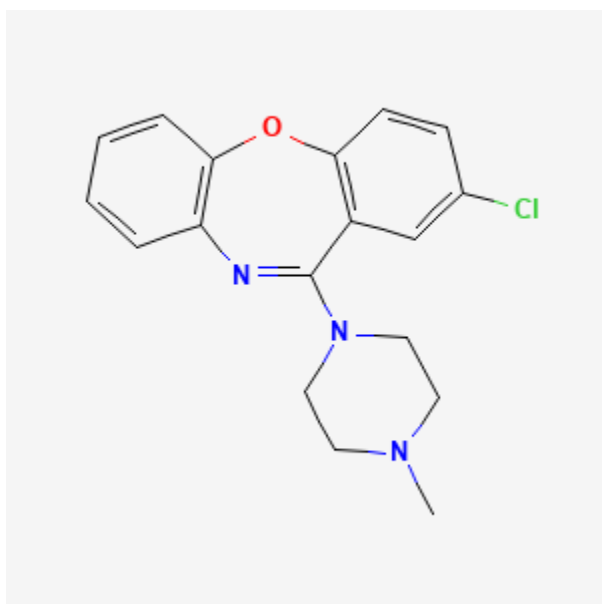




Loxapine

Revised: January 18, 2021.

CASRN: 1977-10-2



Drug Levels and Effects

Summary of Use during Lactation

Because no information is available on the use of loxapine during breastfeeding, an alternate drug may be preferred, especially while nursing a newborn or preterm infant.

Drug Levels

Maternal Levels. Relevant published information was not found as of the revision date.

Infant Levels. Relevant published information was not found as of the revision date.

Disclaimer: Information presented in this database is not meant as a substitute for professional judgment. You should consult your healthcare provider for breastfeeding advice related to your particular situation. The U.S. government does not warrant or assume any liability or responsibility for the accuracy or completeness of the information on this Site.

Attribution Statement: LactMed is a registered trademark of the U.S. Department of Health and Human Services.

Effects in Breastfed Infants

Relevant published information was not found as of the revision date.

Effects on Lactation and Breastmilk

Loxapine can elevate serum prolactin.[1] The hyperprolactinemia is caused by the drug's dopamine-blocking action in the tuberoinfundibular pathway.[2]

The prolactin level in a mother with established lactation may not affect her ability to breastfeed.

Alternate Drugs to Consider

Haloperidol, Olanzapine, Quetiapine, Risperidone

References

1. Meltzer HY, Fang VS, Goode DJ. Prolactin and neuroleptics: Clinical implications for efficacy and toxicity. The effect of neuroleptics and alpha-methyl-para-tyrosine on serum prolactin levels in laboratory animals and man. *Psychopharmacol Bull.* 1978;14:5-7. PubMed PMID: 625539.
2. Maguire GA. Prolactin elevation with antipsychotic medications: Mechanisms of action and clinical consequences. *J Clin Psychiatry.* 2002;63 Suppl 4:56-62. PubMed PMID: 11913677.

Substance Identification

Substance Name

Loxapine

CAS Registry Number

1977-10-2

Drug Class

Breast Feeding

Lactation

Antipsychotic Agents