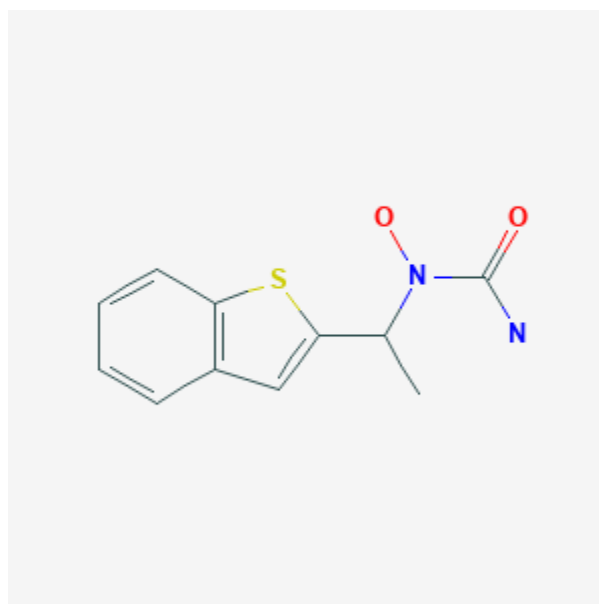




Zileuton

Revised: May 1, 2019.

CASRN: 111406-87-2



Drug Levels and Effects

Summary of Use during Lactation

No published information is available on the use of zileuton during breastfeeding; however, manufacturer's data indicate that the dose in milk is low. Because there is no published experience with zileuton during breastfeeding, an alternate drug may be preferred, especially while nursing a newborn or preterm infant.

Drug Levels

Maternal Levels. Relevant published information was not found as of the revision date.

Infant Levels. Relevant published information was not found as of the revision date.

Disclaimer: Information presented in this database is not meant as a substitute for professional judgment. You should consult your healthcare provider for breastfeeding advice related to your particular situation. The U.S. government does not warrant or assume any liability or responsibility for the accuracy or completeness of the information on this Site.

Attribution Statement: LactMed is a registered trademark of the U.S. Department of Health and Human Services.

Effects in Breastfed Infants

Relevant published information was not found as of the revision date.

Effects on Lactation and Breastmilk

Relevant published information was not found as of the revision date.

Alternate Drugs to Consider

Beclomethasone, Cromolyn, Montelukast, Terbutaline, Theophylline

Substance Identification

Substance Name

Zileuton

CAS Registry Number

111406-87-2

Drug Class

Breast Feeding

Lactation

Anti-Asthmatic Agents

Leukotriene Antagonists

Lipoxygenase Inhibitors