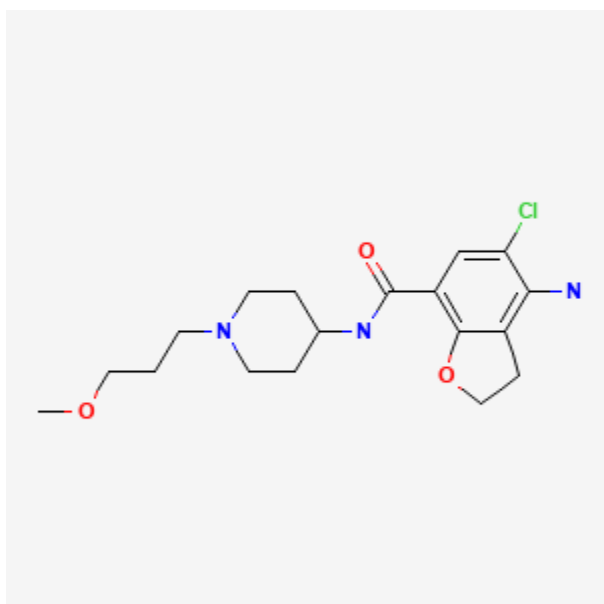




Prucalopride

Revised: July 20, 2020.

CASRN: 179474-81-8



Drug Levels and Effects

Summary of Use during Lactation

No published experience exists with prucalopride during breastfeeding. However, the manufacturer reports an unpublished study that indicates a relatively low amount of drug in breastmilk. Until more data become available, monitor the breastfed infant for diarrhea.

Drug Levels

Maternal Levels. The manufacturer reports an unpublished study in 8 healthy lactating women who were weaning their infants and given prucalopride 2 mg daily for 4 days. Plasma and milk samples were collected at

Disclaimer: Information presented in this database is not meant as a substitute for professional judgment. You should consult your healthcare provider for breastfeeding advice related to your particular situation. The U.S. government does not warrant or assume any liability or responsibility for the accuracy or completeness of the information on this Site.

Attribution Statement: LactMed is a registered trademark of the U.S. Department of Health and Human Services.

predose (day 1 and 4), and at 2, 4, 8, 12, and 24 hours after the dose on day 4. The dose to the breastfed infant was estimated to be 1.74 mcg/kg daily, which is about 6% of the weight-adjusted maternal dose.

Infant Levels. Relevant published information was not found as of the revision date.

Effects in Breastfed Infants

Relevant published information was not found as of the revision date.

Effects on Lactation and Breastmilk

Relevant published information was not found as of the revision date.

Alternate Drugs to Consider

Linaclotide, Lubiprostone, Plecanatide, Psyllium

Substance Identification

Substance Name

Prucalopride

CAS Registry Number

179474-81-8

Drug Class

Breastfeeding

Lactation

Gastrointestinal Agents

Laxatives

Serotonin 5-HT₄ Receptor Agonists