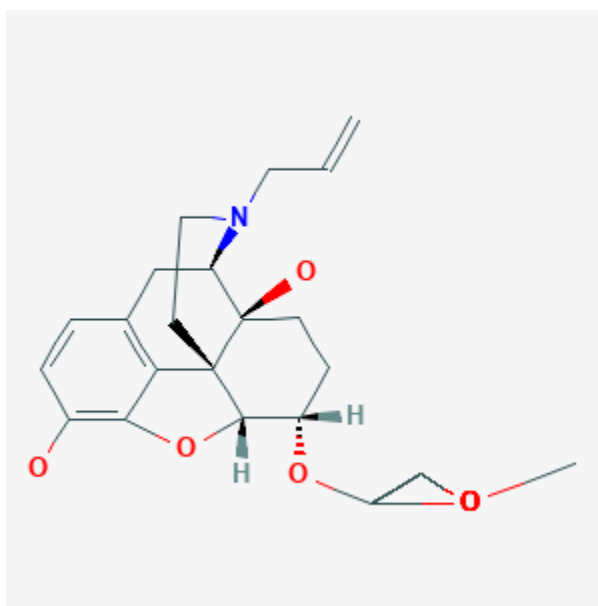




## Naloxegol

Revised: June 3, 2019.

CASRN: 854601-70-0



## Drug Levels and Effects

### Summary of Use during Lactation

No information is available on the excretion of naloxegol into breastmilk. Because of the possibility of inducing opioid withdrawal in the breastfed infant, the manufacturer recommends that breastfeeding is not recommended during treatment with naloxegol.

### Drug Levels

*Maternal Levels.* Relevant published information was not found as of the revision date.

*Infant Levels.* Relevant published information was not found as of the revision date.

**Disclaimer:** Information presented in this database is not meant as a substitute for professional judgment. You should consult your healthcare provider for breastfeeding advice related to your particular situation. The U.S. government does not warrant or assume any liability or responsibility for the accuracy or completeness of the information on this Site.

**Attribution Statement:** LactMed is a registered trademark of the U.S. Department of Health and Human Services.

## Effects in Breastfed Infants

Relevant published information was not found as of the revision date.

## Effects on Lactation and Breastmilk

Relevant published information was not found as of the revision date.

## Substance Identification

### Substance Name

Naloxegol

### CAS Registry Number

854601-70-0

### Drug Class

Gastrointestinal Agents

Narcotic Antagonists