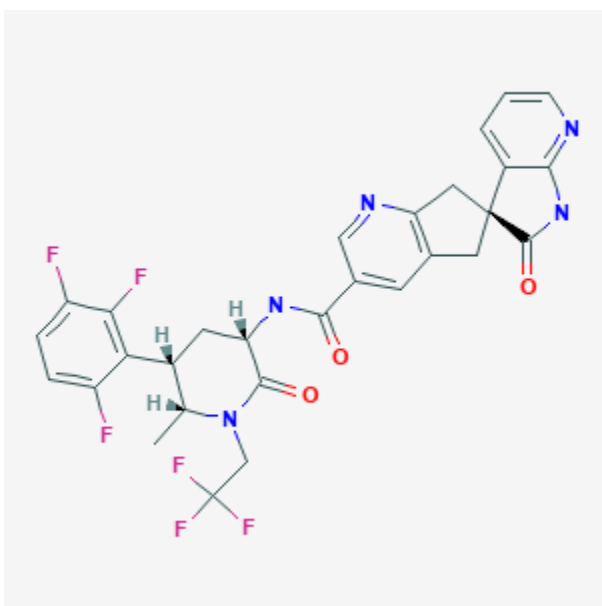




Atogepant

Revised: February 15, 2023.

CASRN: 1374248-81-3



Drug Levels and Effects

Summary of Use during Lactation

Because there is no published experience with atogepant during breastfeeding, an alternate drug may be preferred, especially while nursing a newborn or preterm infant.

Drug Levels

Maternal Levels. Relevant published information was not found as of the revision date.

Infant Levels. Relevant published information was not found as of the revision date.

Disclaimer: Information presented in this database is not meant as a substitute for professional judgment. You should consult your healthcare provider for breastfeeding advice related to your particular situation. The U.S. government does not warrant or assume any liability or responsibility for the accuracy or completeness of the information on this Site.

Attribution Statement: LactMed is a registered trademark of the U.S. Department of Health and Human Services.

Effects in Breastfed Infants

Relevant published information was not found as of the revision date.

Effects on Lactation and Breastmilk

Relevant published information was not found as of the revision date.

Alternate Drugs to Consider

(Migraine Prophylaxis) Divalproex, Erenumab, Metoprolol, Nortriptyline, Propranolol, Rimegepant, Topiramate, Valproic Acid

Substance Identification

Substance Name

Atogepant

CAS Registry Number

1374248-81-3

Drug Class

Breast Feeding

Lactation

Milk, Human

Analgesics

Calcitonin Gene Related Peptide Receptor Antagonists

CGRP-R Inhibitors