

H.6.1.2 Bevacizumab vs control

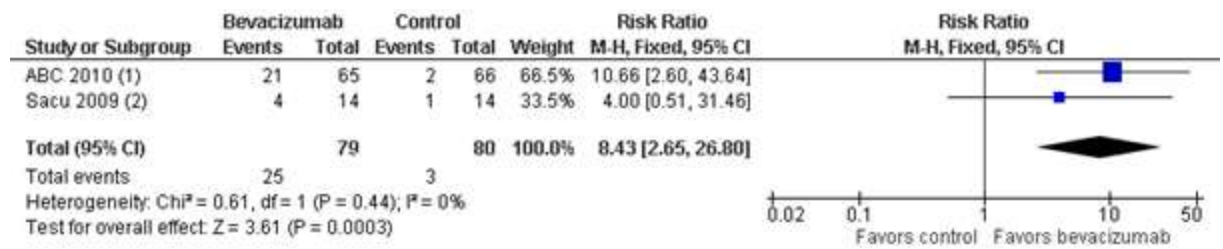
Outcomes	Illustrative comparative risks* (95% CI)		Relative effect	No of Participants	Quality of the evidence	Comments
	Corresponding risk	Assumed risk	(95% CI)	(studies)	(GRADE)	
	Bevacizumab	Control				
Gain of 15 letters or more visual acuity at one year	293 per 1000 (92 to 937)	38 per 1000	RR 8.43 (2.65 to 26.80)	159 (2 studies)	⊕⊕⊕⊖ Moderate ¹	
Loss of fewer than 15 letters visual acuity at one year	896 per 1000 (763 to 1000)	700 per 1000	RR 1.32 (1.13 to 1.54)	159 (2 studies)	⊕⊕⊖⊖ Low ²	
Mean change in visual acuity at one year (number of letters)	-	-	-	-	.	The mean change from baseline in visual acuity was 7.0 letters in the bevacizumab group and -9.4 letters in the control group in one study. The second study reported participants in the bevacizumab group gained 8 letters on average and participants in the control group lost 3

Macular Degeneration

Appendix H: Grade tables and meta-analysis results

						letters on average
Serious systemic adverse events at one year	31 per 1000	15 per 1000	RR 2.03 (0.19 to 21.85)	131 (1 study)	⊕⊕⊖⊖ Low ³	
Serious ocular adverse events at one year	169 per 1000	91 per 1000	RR 1.86 (0.73 to 4.74)	131 (1 study)	⊕⊕⊖⊖ Low ³	
<p>*The basis for the assumed risk is based on the assumed risk in the comparison group and the relative effect of the intervention (and its 95%CI)</p> <p>1. Downgrade one level due to one study (Sacu 2009) being an open label study.</p> <p>2. Downgrade one level for risk of bias due to open label study design and one level for imprecision due to 95%CI of estimated effect crossing 1 line of defined minimal important difference</p> <p>3.. Downgrade two levels of serious imprecision</p>						

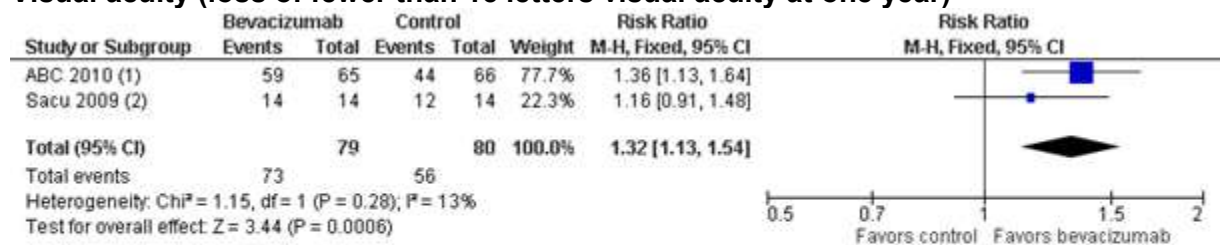
Visual acuity (gain of 15 letters or more visual acuity at one year)



Footnotes

- (1) Control group in the ABC study received standard therapy including pegaptanib injections, verteporfin PDT, or sham injection
- (2) Control group in the Sacu 2009 study received verteporfin photodynamic therapy plus same day 4 mg intravitreal triamcinolone...

Visual acuity (loss of fewer than 15 letters visual acuity at one year)



Footnotes

- (1) Control group in the ABC study received standard therapy including pegaptanib injections, verteporfin PDT, or sham injection
- (2) Control group in the Sacu 2009 study received verteporfin photodynamic therapy plus same day 4 mg intravitreal triamcinolone...