

H.6.1.4 Bevacizumab vs ranibizumab

Outcomes	Illustrative comparative risks* (95% CI)		Relative effect (95% CI)	No of Participants (studies)	Quality of the evidence (GRADE)	Comments
	Corresponding risk	Assumed risk				
	Ranibizumab	Bevacizumab				
Gain of 15 letters or more visual acuity at one year	238 per 1000 (202 to 279)	258 per 1000	RR 0.96 (0.85 to 1.08)	3101 (8 studies)	⊕⊕⊕⊕ High	
Loss of fewer than 15 letters visual acuity at one year	942 per 1000 (923 to 960)	942 per 1000	RR 1.00 (0.98 to 1.02)	2817 (7 studies)	⊕⊕⊕⊕ High	
Mean change in visual acuity at one year (number of letters)	The mean change in visual acuity in the bevacizumab groups was on average 0.48 fewer letters gained (95% CI 1.47 fewer letters to 0.51 more letters)	The mean change across ranibizumab groups ranged from gains of 3 to 8 letters	MD -0.48 (-1.47 to 0.51)	3101 (8 studies)	⊕⊕⊕⊕ High	
Serious systemic adverse events at one year	148 per 1000 (150 to 206)	175 per 1000 with at least one serious systemic adverse event	RR 1.18 (1.01 to 1.39)	3038 (5 studies)	⊕⊕⊕⊖ Moderate ¹	
Gastrointestinal disorders	10 per 1000	20 per 1000	RR 1.85 (1.01, 3.40)	3038 (5 studies)	⊕⊕⊕⊖ Moderate ¹	
Myocardial infarction	<10 per 1000	<10 per 1000	RR 0.51 (0.22 to 1.19)	3038 (5 studies)	⊕⊕⊖⊖ Low ²	
Stroke or cerebral infarction	<10 per 1000	<10 per 1000	RR 0.65 (0.25 to 1.67)	3038 (5 studies)	⊕⊕⊖⊖ Low ²	
Venous thrombotic event	<10 per 10000	<10 per 1000	RR 2.04 (0.61 to 6.75)	2721 (4 studies)	⊕⊕⊖⊖ Low ²	

Macular Degeneration

Appendix H: Grade tables and meta-analysis results

Serious ocular adverse events at one year	< 5 per 1000	<5 per 1000	Range of RRs 0.51 (0.05 to 5.62) to 7.05 (0.36 to 136.28)	Range 1670 to 2280 (2 to 3 studies)		Studies reported different ocular adverse events
Retinal detachment	0	<10 per 1000	RR 7.05 (0.36 to 136.28)	1670 (2 studies)	⊕⊕⊖⊖ Low ²	
Severe uveitis	< 10 per 1000	<10 per 1000	RR 4.14 (0.46 to 36.97)	1795 (2 studies)	⊕⊕⊖⊖ Low ²	
Endophthalmitis	<10 per 1000	<10 per 1000	RR 1.68 (0.40 to 7.00)	2111 (3 studies)	⊕⊕⊖⊖ Low ²	
Retinal pigment epithelial tear	<10 per 1000	<10 per 1000	RR 1.37 (0.31 to 6.12)	2236 (3 studies)	⊕⊕⊖⊖ Low ²	
cataract	<10 per 1000	<10 per 1000	RR 0.51 (0.05 to 5.62)	2280 (3 studies)	⊕⊕⊖⊖ Low ²	

*The basis for the assumed risk is based on the assumed risk in the comparison group and the relative effect of the intervention (and its 95%CI)

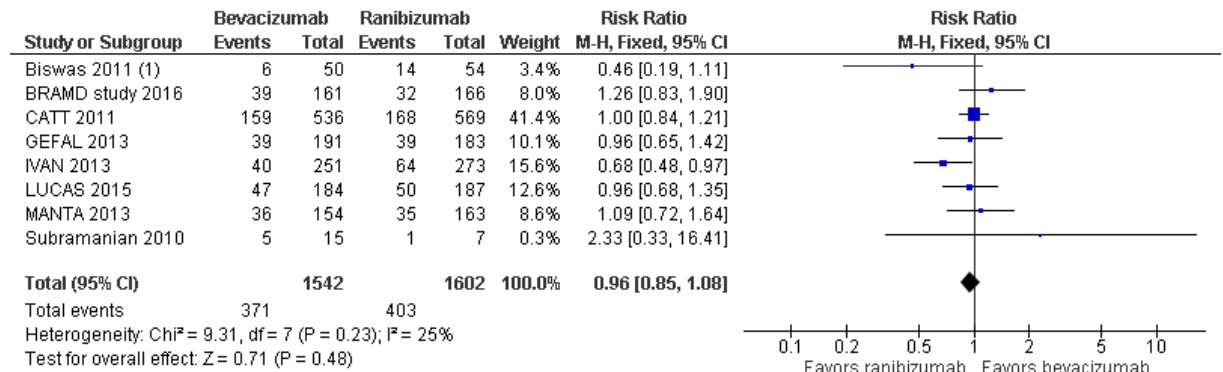
1. Adverse vent outcome downgrade to moderate quality as not all eligible trials reported these outcomes and numbers of some adverse events were small (<1 %), and 95%CI of estimated effect under the possibility of significant and non-significant values
2. Downgrade two levels for serious imprecision

Number of studies	Risk of bias	Inconsistency	Indirectness	Imprecision	Sample size	Effect (95%CI)	Quality
Bevacizumab vs ranibizumab							
Number of injections							
5 studies (CATT 2011, Biswas 2011, GEFAL 2013, LUCAS 2015, MANTA 2013)	Serious ¹	Not serious	Not serious	Not serious	1660	MD=0.60 (0.33, 0.87)	Moderate
1. Downgrade for masking of participants and incomplete outcome data.							

Bevacizumab vs ranibizumab

One year

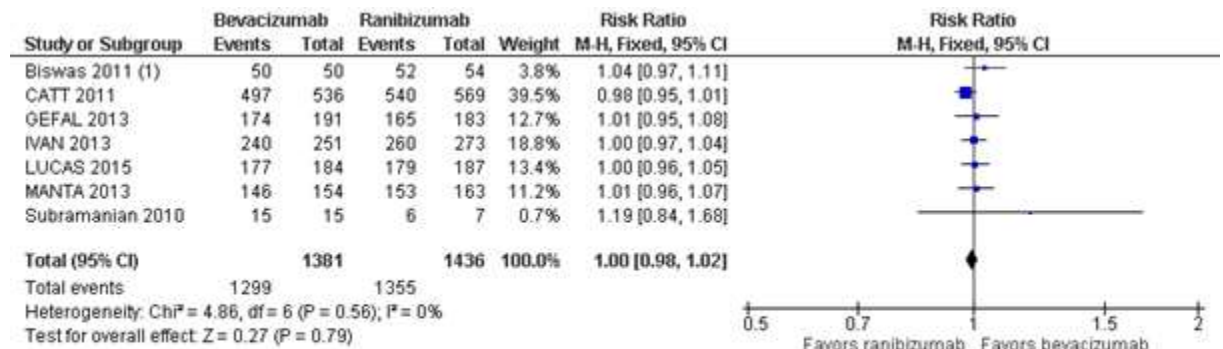
Visual acuity (gain of 15 letters or more at one year)



Footnotes

(1) follow-up was 18 months

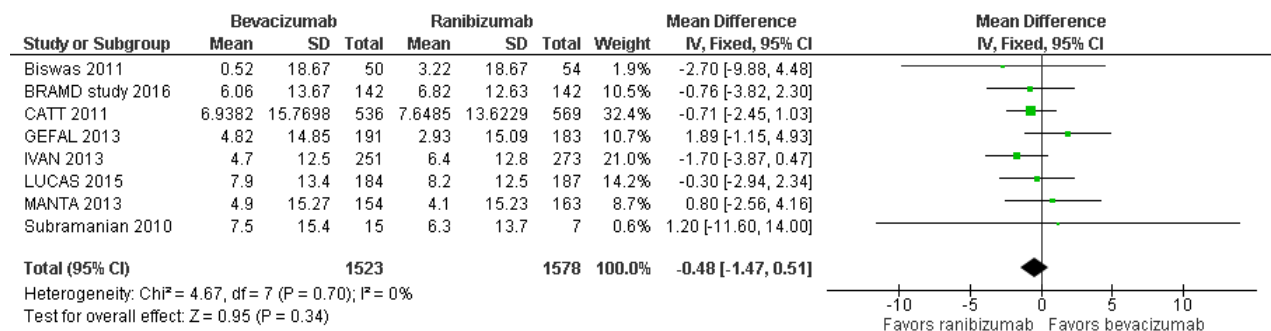
Visual acuity (loss of fewer than 15 letters at one year)



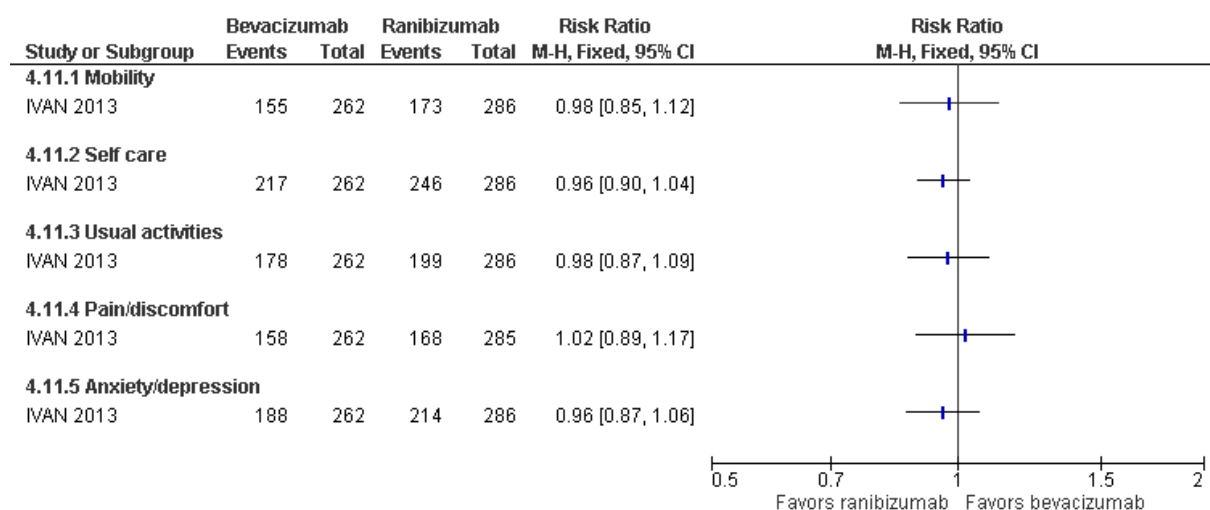
Footnotes

(1) follow-up was 18 months

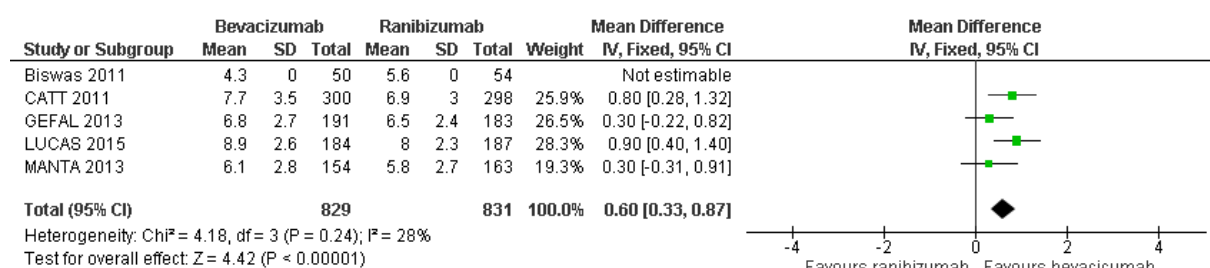
Visual acuity (mean change in number of letters)



Quality of life (no problem in quality of life)

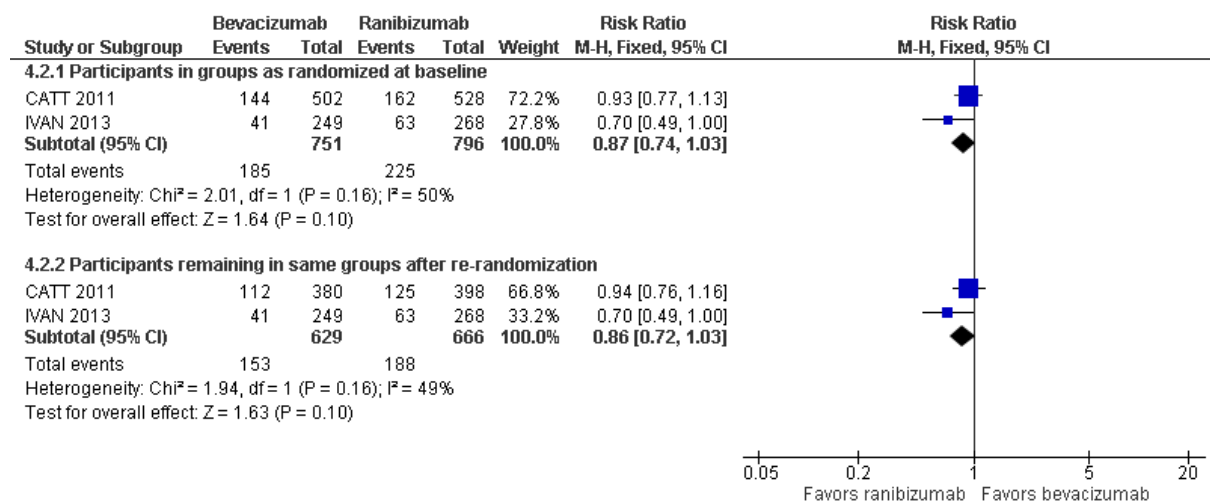


Number of injections

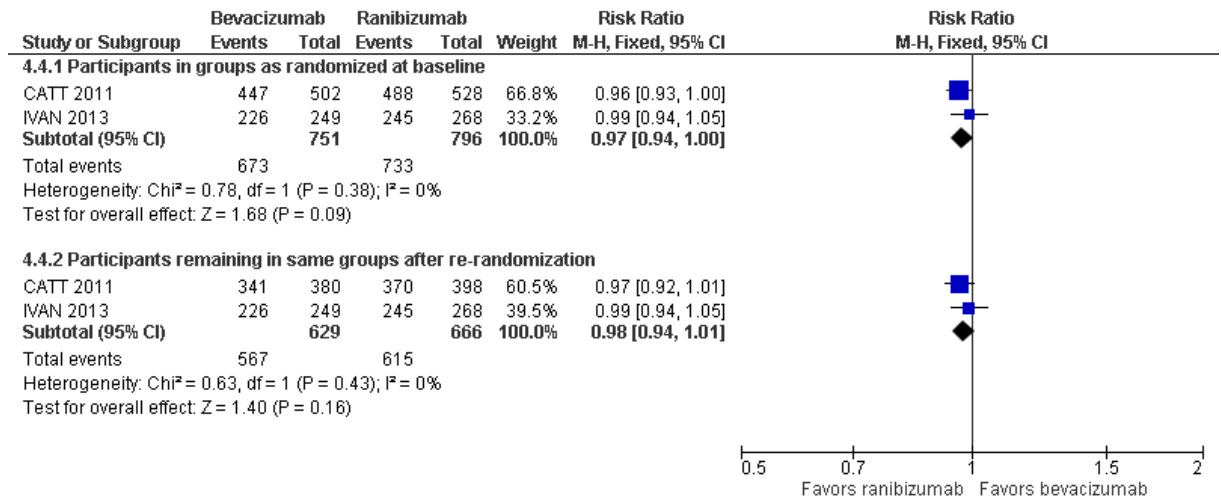


Two years

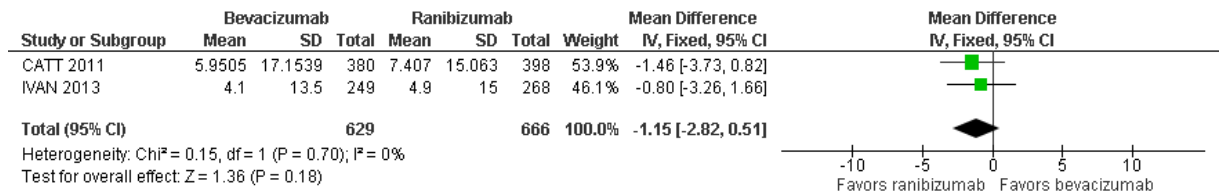
Visual acuity (gain of 15 letters or more)



Visual acuity (loss of fewer than 15 letters)



Visual acuity (mean change in number of letters)



Quality of life (no problem in quality of life)

