

H.6.1.5 Aflibercept vs ranibizumab

Outcomes	Illustrative comparative risks* (95% CI)		Relative effect (95% CI)	No of Participants (studies)	Quality of the evidence (GRADE)	Comments
	Corresponding risk	Assumed risk				
	Aflibercept	Ranibizumab				
Mean change in BCVA in ETDRS letters at 1 year	Mean change in visual acuity in aflibercept groups was on average 0.15 fewer letters gained (95% CI 1.47 fewer letters to 1.17 more letters)	Mean change in visual acuity across ranibizumab groups ranged from gains of 8.57 letters to 8.71 letters	MD -0.15 (-1.47 to 1.17)	2412 (2 studies)	⊕⊕⊕⊕ High	
Gain of 15 of BCVA at one year	314 per 1000 (275 to 360)	324 per 1000	RR 0.97 (0.85 to 1.11)	2412 (2 studies)	⊕⊕⊕⊕ High	
Quality of life measures at 1 year (national eye institute-visual function questionnaire)	Mean improvement in composite NEI-VQF score in intervention groups was on average 0.39 points lower (95% CI 1.71 points lower to 0.93 points higher)	Mean improvement in composite NEI-VQF score ranged across control groups from 4.9 to 6.3 points	MD -0.39 (-1.71 to 0.93)	2412 (2 studies)	⊕⊕⊕⊕ High	
Adverse events (serious systemic events at 1 year)	138 per 1000 (110 to 174)	139 per 1000	RR 0.99 (0.79 to 1.25)	2419 (2 studies)	⊕⊕⊕⊖ Moderate ¹	
Adverse events (serious ocular events at 1 year)	20 per 1000 (12 to 34)	32 per 1000	RR 0.62 (0.36 to 1.07)	2419 (2 studies)	⊕⊕⊕⊖ Moderate ¹	
*The basis for the assumed risk is based on the assumed risk in the comparison group and the relative effect of the intervention (and its 95%CI)						
1. Adverse vent outcome downgrade to moderate quality as the numbers of events were small (wide confidence intervals), and 95%CI of estimated effect under the possibility of significant and non-significant values						

The data presented in the GRADE table below were identified by update searches undertaken after the search date of the Cochrane systematic reviews used above.

Aflibercept vs ranibizumab: NEI-VFQ 25

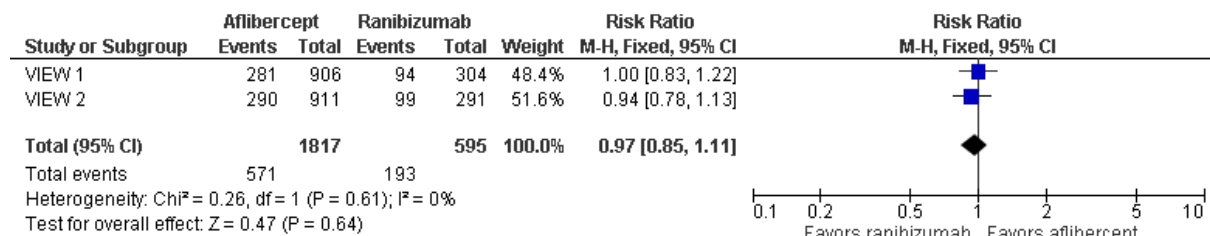
Number of studies	Risk of bias	Inconsistency	Indirectness	Imprecision	Sample size	Effect (95%CI)	Quality
Proportion of people gaining more than 5 ETDRS letters and having clinical improvement (more than 6-points) in the NEI-VFQ25 at 52-weeks follow –up							
2 (VIEW 1, VIEW2)	Not serious	Serious ¹	Not serious	Not serious	1193	RR 0.97 (0.86, 1.10)	MODERATE
NEI-VFQ-25 subscale score changes from baseline to week 52 (higher scores indicate better QoL)							
General vision	Not serious	Not serious	Not serious	Not serious	1193	MD 0.06 (-2.00, 2.13)	HIGH
Near activities	Not serious	Not serious	Not serious	Not serious	1193	MD -0.62 (-3.09, 1.86)	HIGH
Distance activities	Not serious	Not serious	Not serious	Serious ²	1193	MD 0.08 (-2.43, 2.58)	MODERATE
Mental health	Not serious	Not serious	Not serious	Serious ²	1193	MD 0.14 (-2.41, 2.70)	MODERATE
Role difficulties	Not serious	Not serious	Not serious	Serious ²	1193	MD 1.09 (-2.04, 4.23)	MODERATE
Dependency	Not serious	Not serious	Not serious	Serious ²	1193	MD -1.29 (-4.00, 1.43)	MODERATE
Social functioning	Not serious	Not serious	Not serious	Serious ²	1193	MD 0.18 (-2.35, 2.70)	MODERATE
Driving	Not serious	Not serious	Not serious	Serious ²	1193	MD 1.51 (-1.15, 4.17)	MODERATE
Colour vision	Not serious	Not serious	Not serious	Not serious	1193	MD -2.04 (-4.33, 0.26)	HIGH

Number of studies	Risk of bias	Inconsistency	Indirectness	Imprecision	Sample size	Effect (95%CI)	Quality
Ocular pain	Not serious	Not serious	Not serious	Not serious	1193	MD -0.94 (-3.21, 1.32)	HIGH
Peripheral vision	Not serious	Not serious	Not serious	Not serious	1193	MD 0.86 (-3.73, 2.00)	HIGH
General health	Not serious	Not serious	Not serious	Not serious	1193	MD -0.23 (-2.56, 2.10)	HIGH

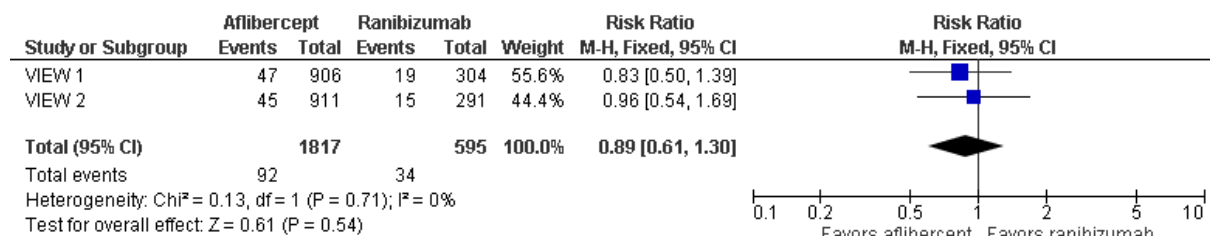
1. Downgraded one level for inconsistency due to heterogeneity ($i^2 > 50\%$)
2. Downgraded one level for imprecision due to 95%CI of estimated effect crossing 1 line of a defined minimal important difference (2.3 point)

Aflibercept vs ranibizumab (one year)

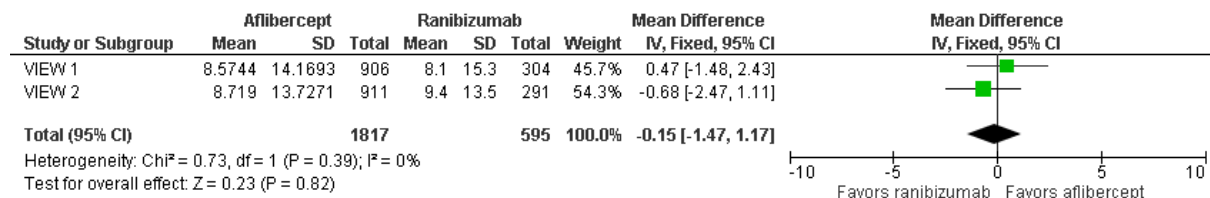
Gain of ≥ 15 letters of BCVA



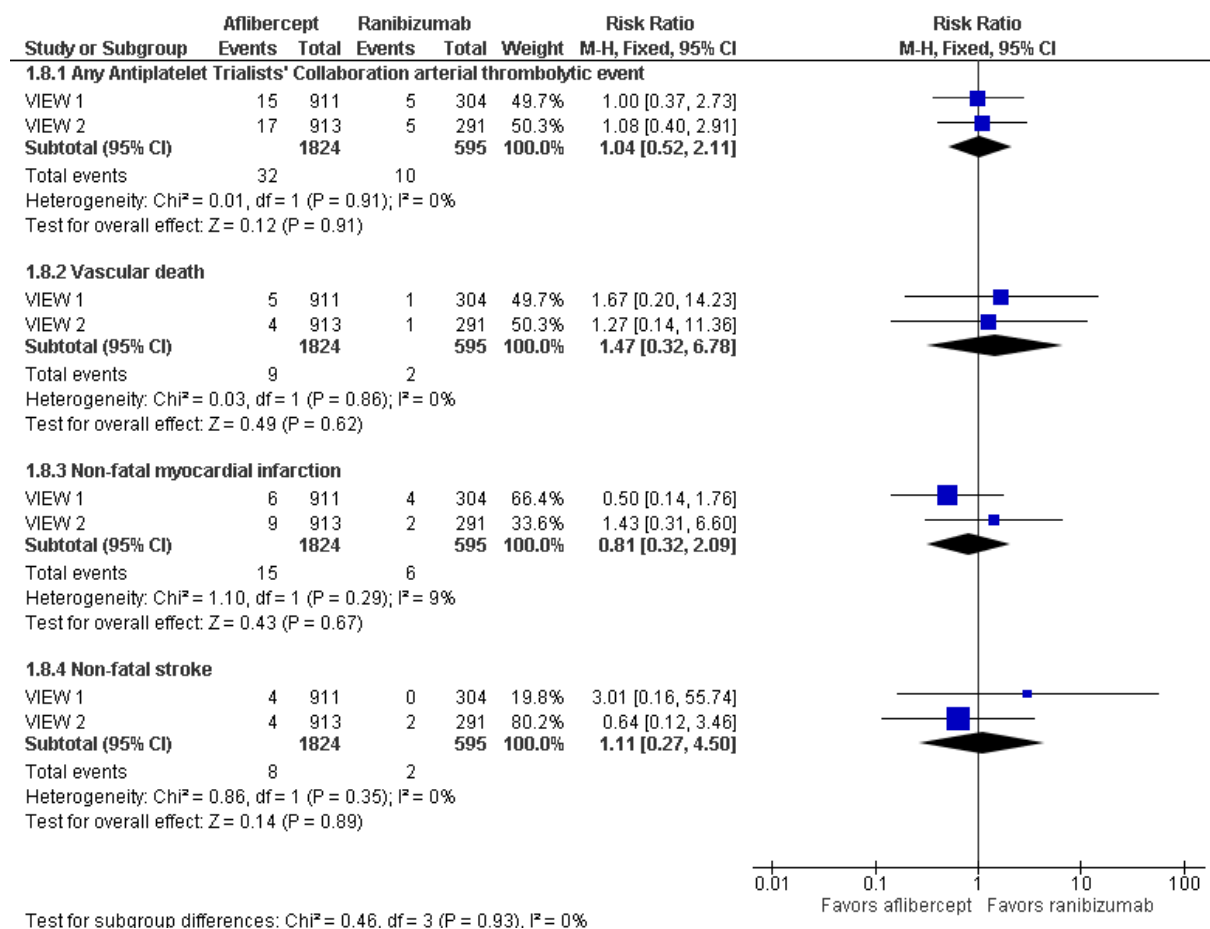
Loss of ≥15 letters of BCVA



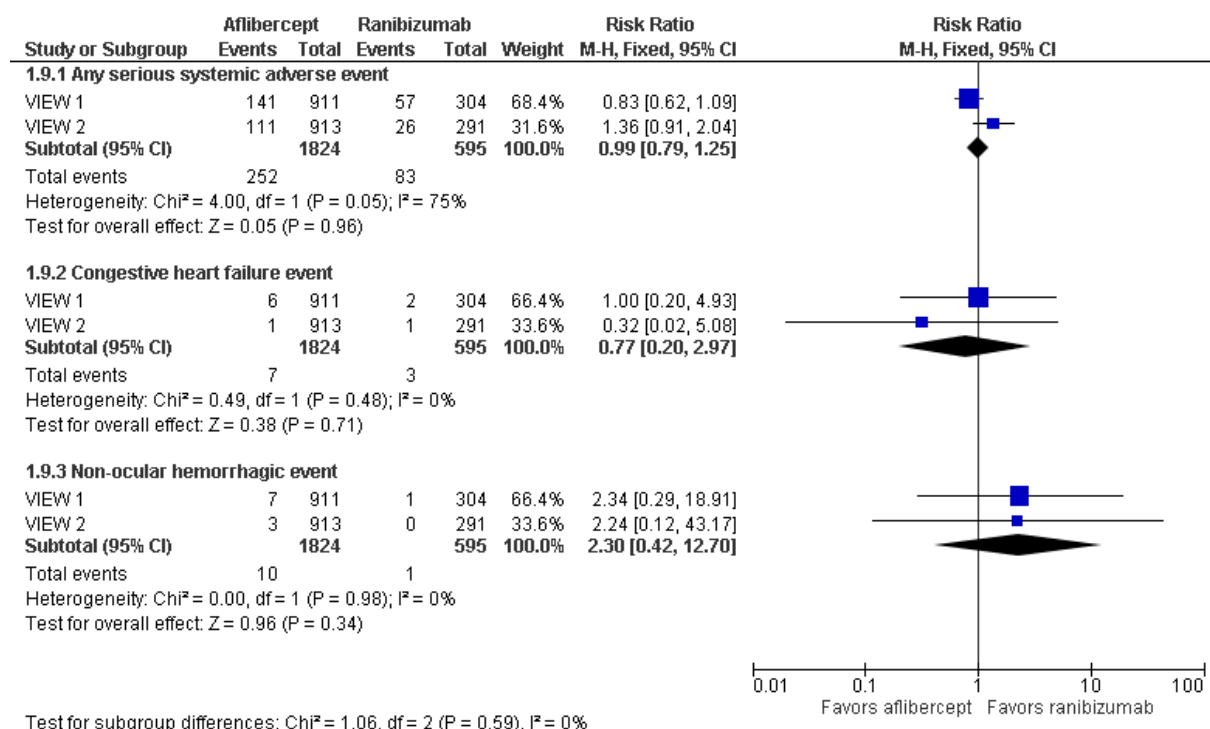
Mean change in BCVA in ETDRS letters



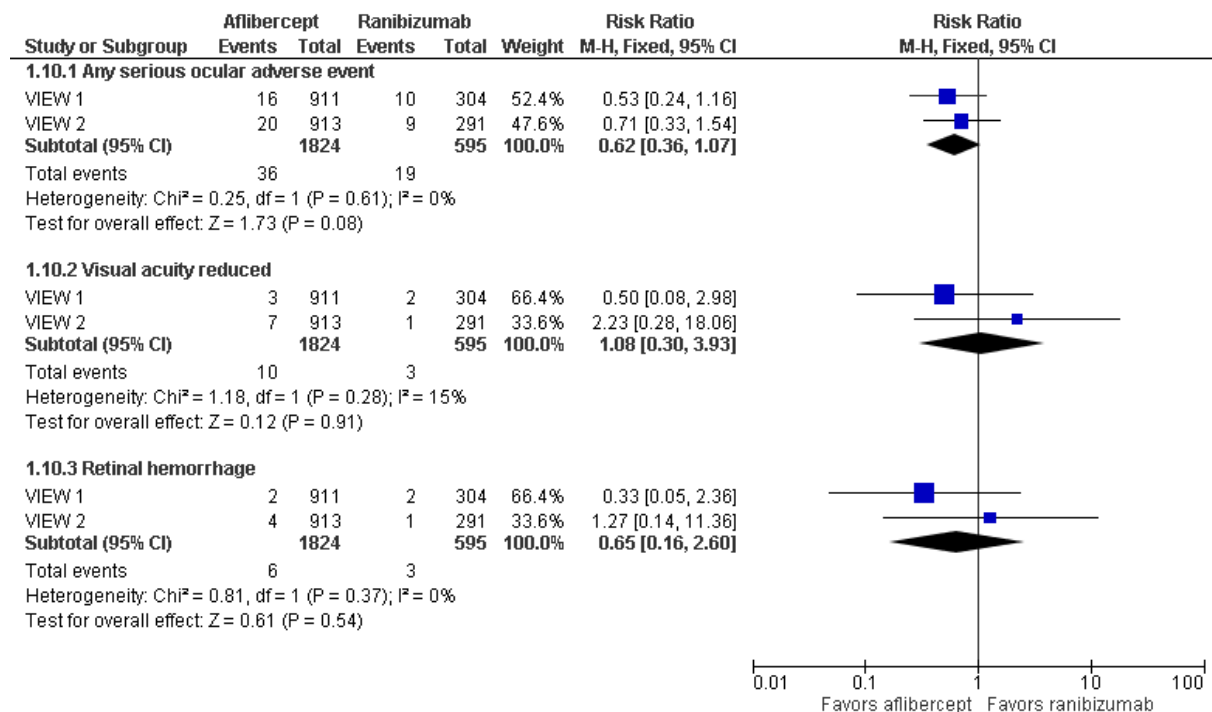
Arterial thrombotic events



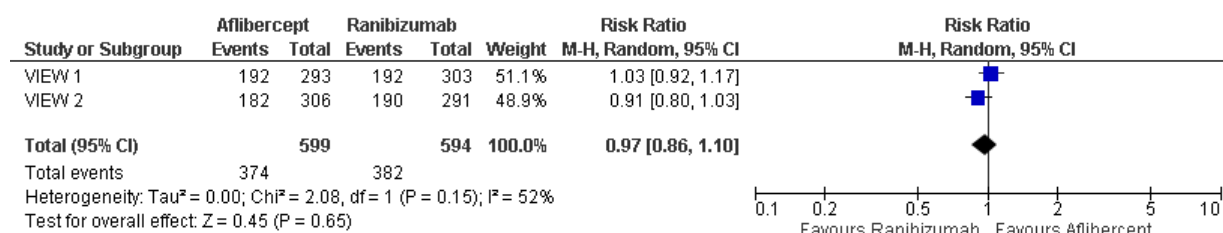
Serious systemic events



Serious ocular events



Proportion of people had gain more than 5 ETDRS letters and had clinical improvement in NEI-VFQ compsite score (more than 6-point)



Mean change in NEI-VFQ subscale score

