

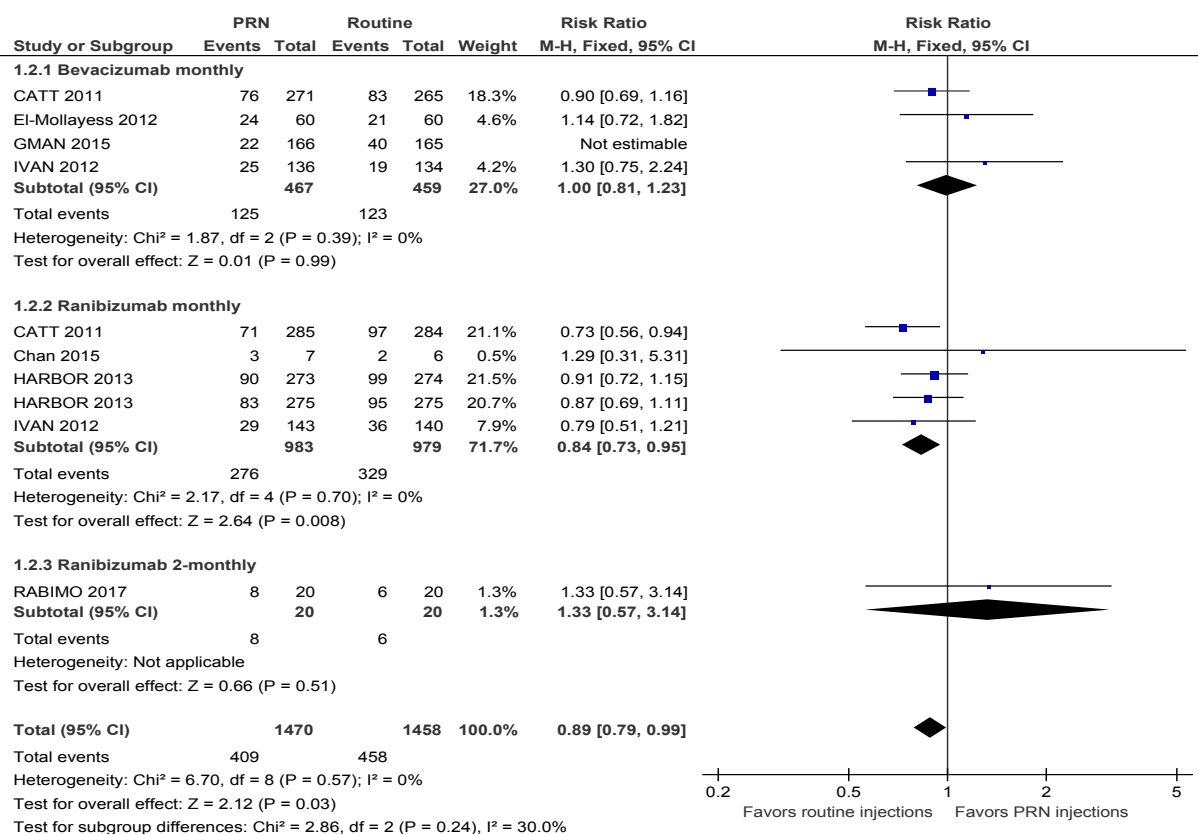
## H.6.1.6 Treatment frequency: PRN vs routine injection

Number of studies	Risk of bias	Inconsistency	Indirectness	Imprecision	Sample size	Effect (95%CI)	Quality
<b>PRN vs routine injections</b>							
<b>Gain of ≥15 letters at one year</b>							
6 studies (CATT 2011, HARBOUR 2013, El-Mollayess 2012, IVAN 2012, Chan 2015, RABIMO 2017)	Serious <sup>1</sup>	Not serious	Not serious	serious <sup>3</sup>	2928	RR 0.89 (0.79, 0.99)	LOW
<b>Loss of &lt;15 letters at one year</b>							
4 studies (CATT 2011, IVAN 2012, HARBOUR 2013, RABIMO 2017)	Serious <sup>1,2</sup>	Not serious	Not serious	Not serious	2795	RR 0.99 (0.97, 1.01)	MODERATE
<b>Mean change in BCVA in ETDRS letters at one year (higher values indicate better vision)</b>							
4 studies (CATT 2011, HARBOUR 2013, , El-Mollayess 2012, IVAN 2012)	Serious <sup>1</sup>	Not serious	Not serious	Not serious	2874	MD -1.45 (-2.45, -0.45)	MODERATE
<b>Mean number of injections at one year</b>							
2 studies (CATT 2011, , HARBOUR 2013)	Serious <sup>1</sup>	Serious <sup>4</sup>	Not serious	Not serious	2202	MD -4.22 (-4.72, -3.73)	LOW
<b>Adverse events (serious systemic events at one year)</b>							
2 studies (CATT 2011, HARBOUR 2013,)	Serious <sup>1</sup>	Serious <sup>4</sup>	Not serious	Serious <sup>5</sup>	2280	RR 1.07 (0.70, 1.63)	VERY LOW
<b>Adverse events (serious ocular events at one year)</b>							
2 studies (CATT 2011, HARBOUR 2013,)	Serious <sup>1</sup>	Serious <sup>4</sup>	Not serious	not serious	2280	RR 0.31 (0.13, 0.78)	LOW
<ol style="list-style-type: none"> <li>1. Downgraded one level for risk of bias due to masking of participants (either not reported in the study or participants were not blinded in the study)</li> <li>2. Downgraded one level for risk of bias due to incomplete data (IVAN)</li> <li>3. Downgraded one level for imprecision due to 95%CI of estimated effect crossing 1 line of a defined minimal important difference</li> </ol>							

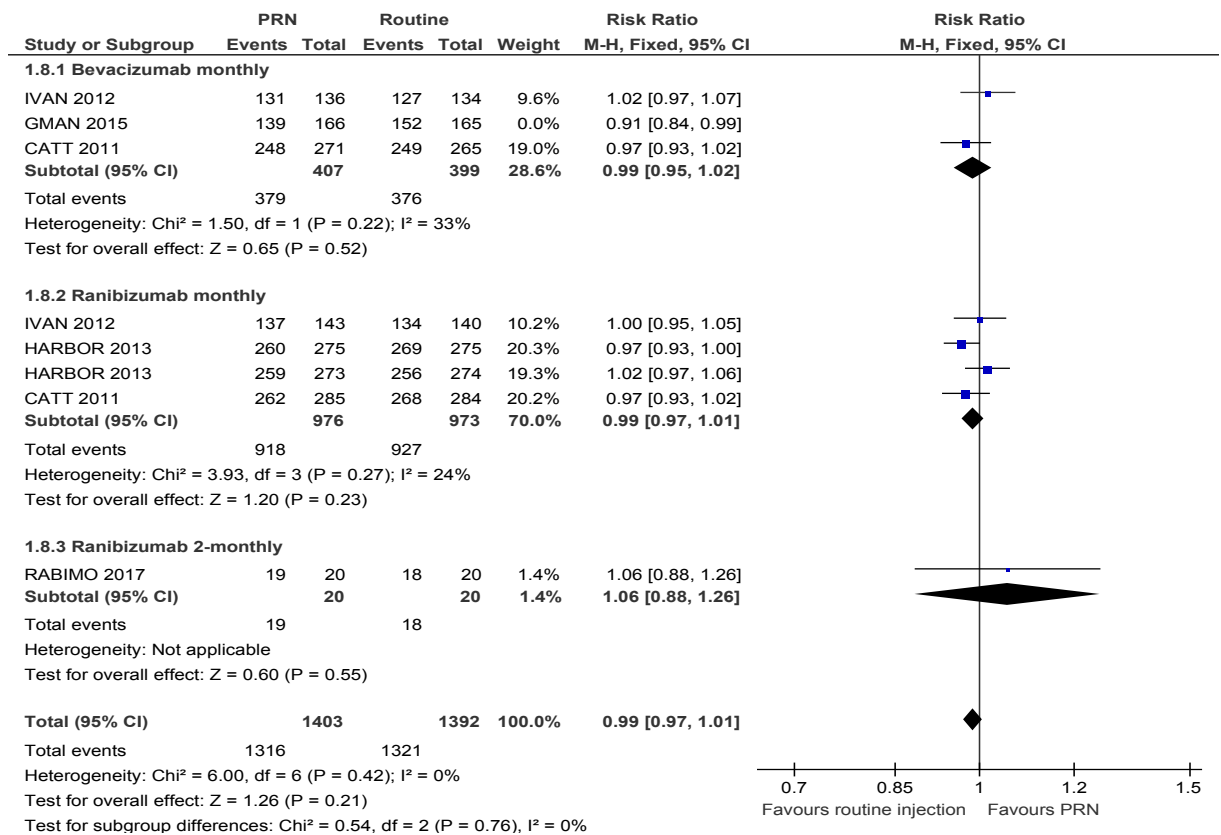
Number of studies	Risk of bias	Inconsistency	Indirectness	Imprecision	Sample size	Effect (95%CI)	Quality
4. Downgraded for inconsistency due to heterogeneity ( $i^2 > 50\%$ ) 5. Downgrade one level for imprecision due to 95%CI of the effect cannot be estimated							

### PRN vs routine injections

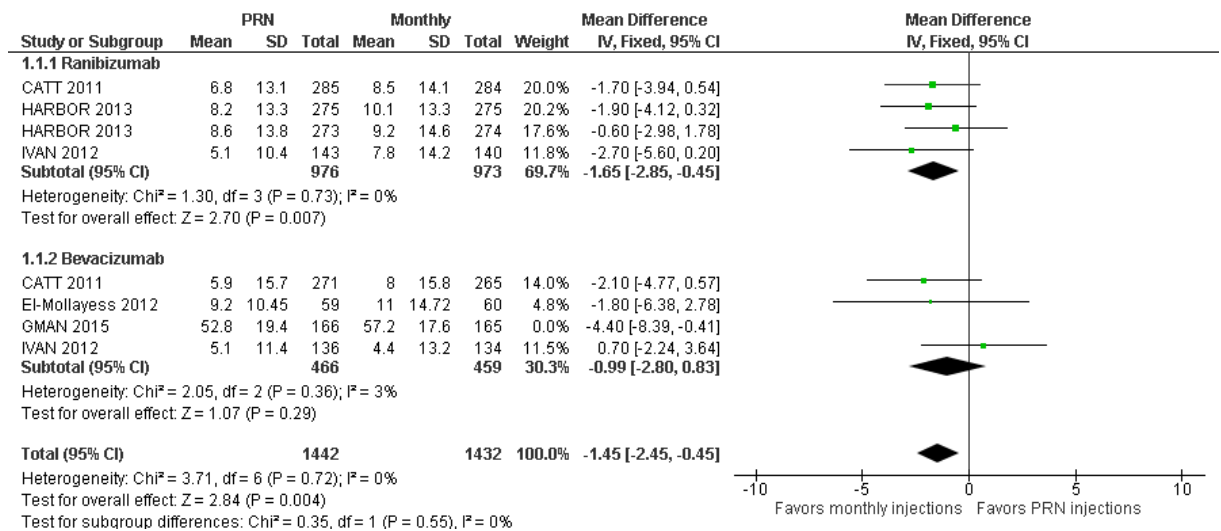
#### Gain of 15 or more letters ETDRS



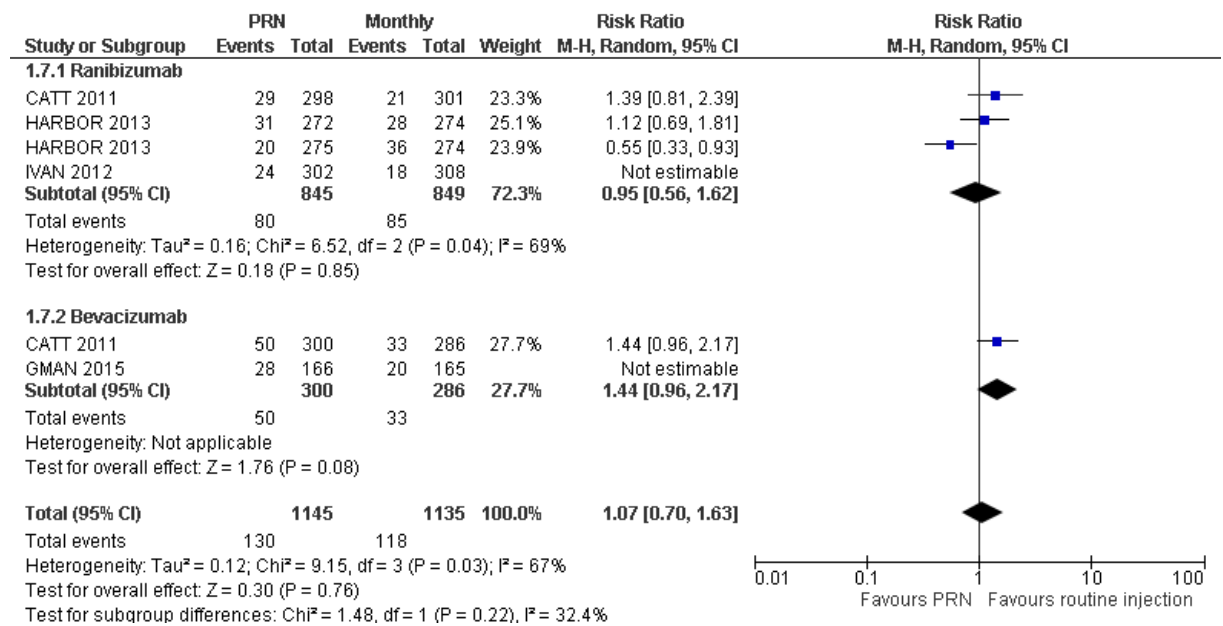
**Loss of fewer than 15 letters ETDRS**



**Mean change in BCVA of EDTRS letters**



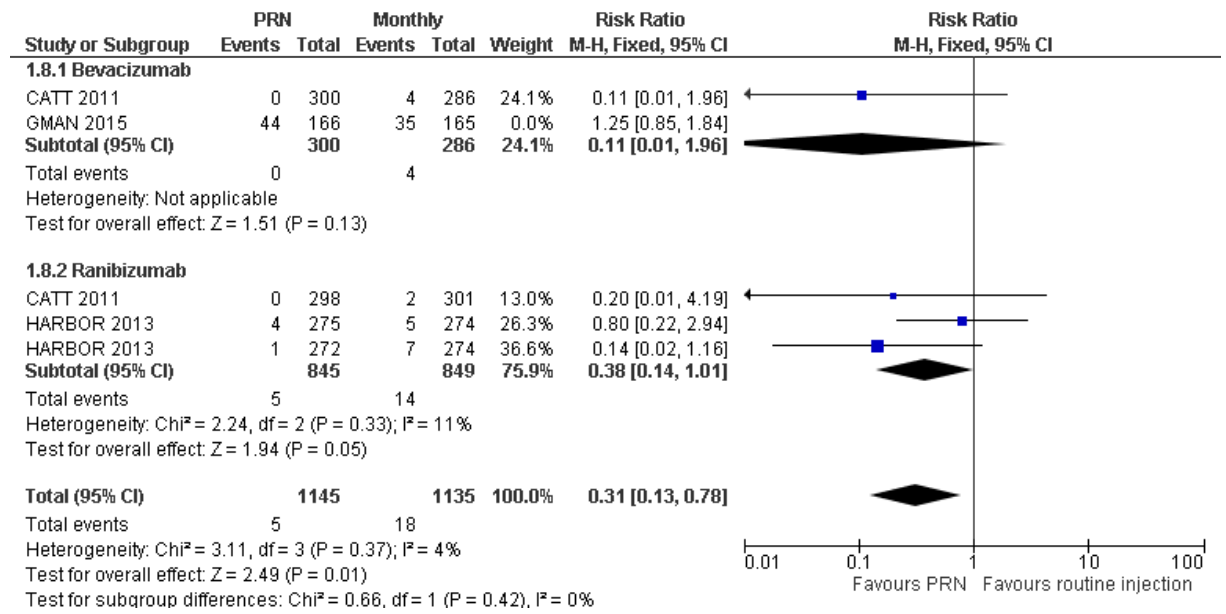
**Serious systemic events**



**Serious ocular events**

# Macular Degeneration

## Appendix H: Grade tables and meta-analysis results



## Number of injections

