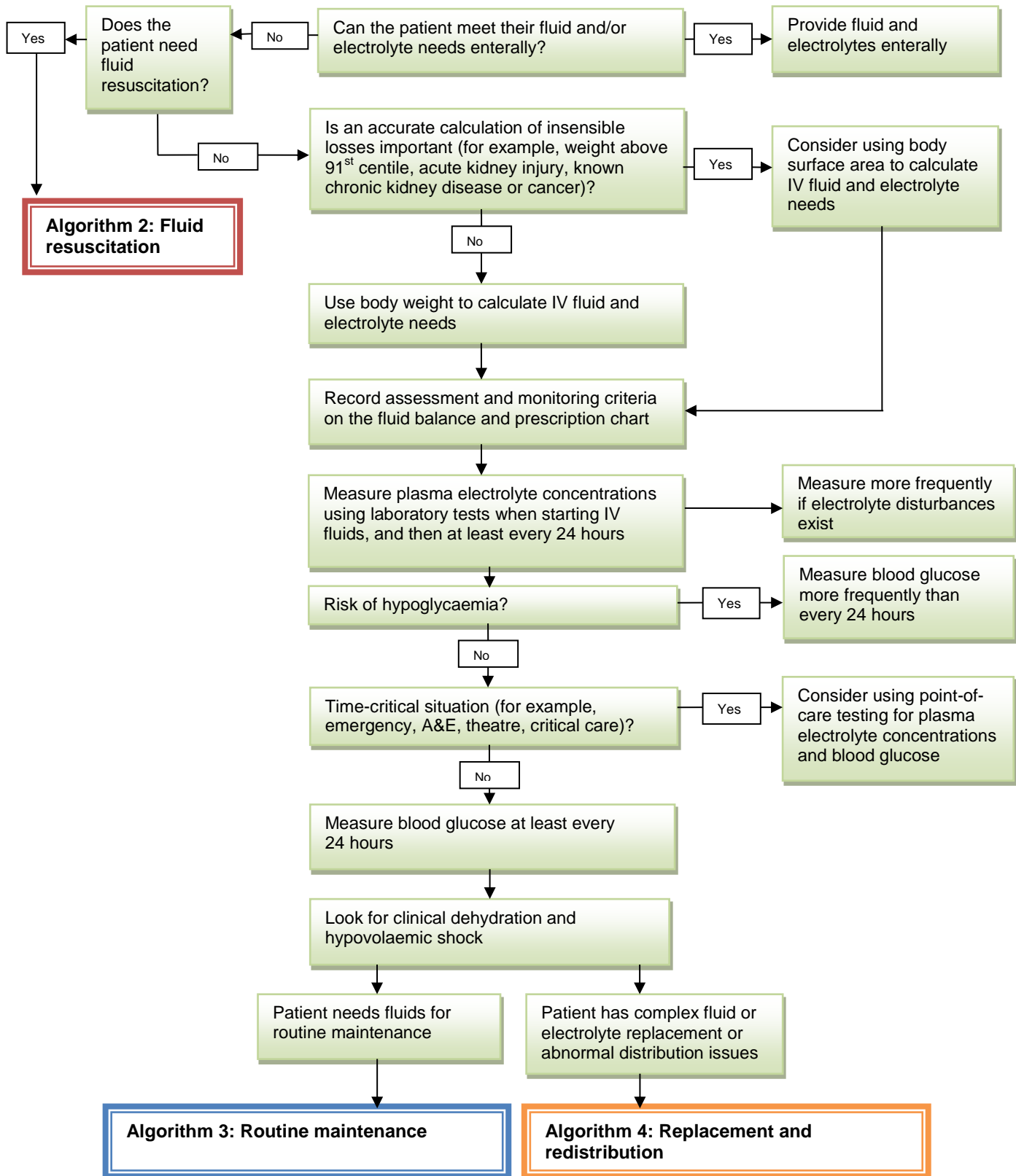


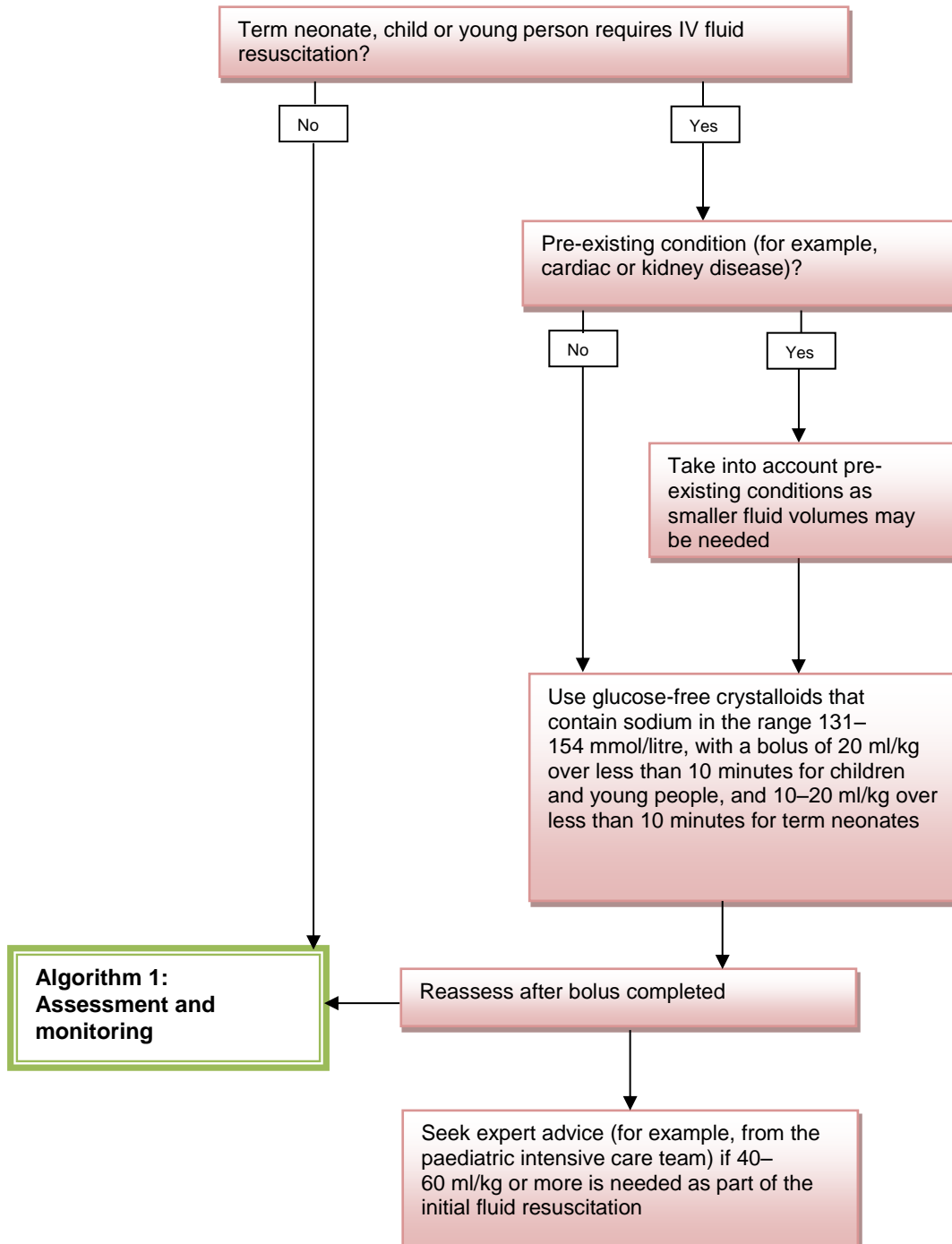
# Algorithms for IV fluid therapy in children and young people in hospital

## Algorithm 1: Assessment and monitoring

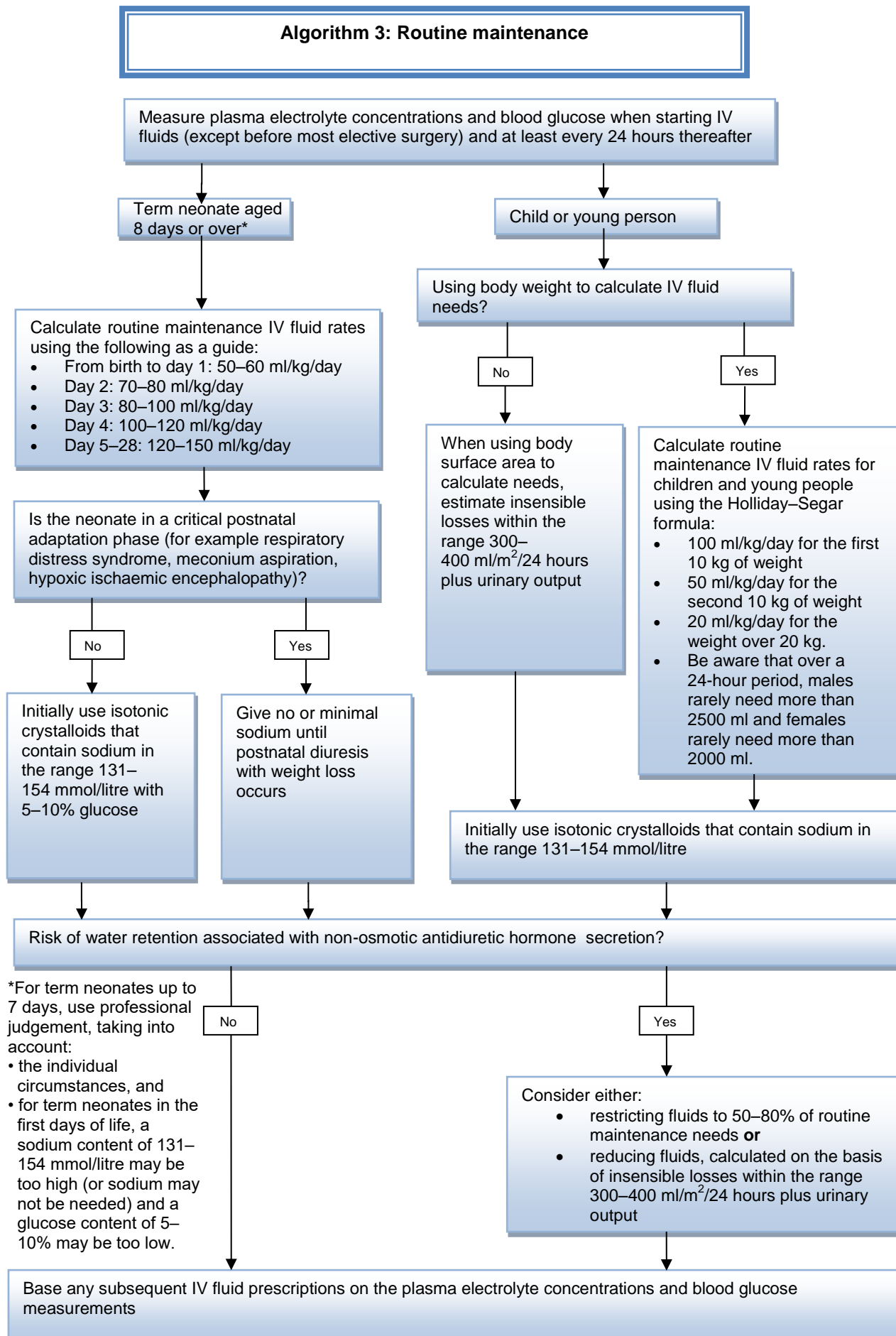


## Algorithms for IV fluid therapy in children and young people in hospital

### Algorithm 2: Fluid resuscitation

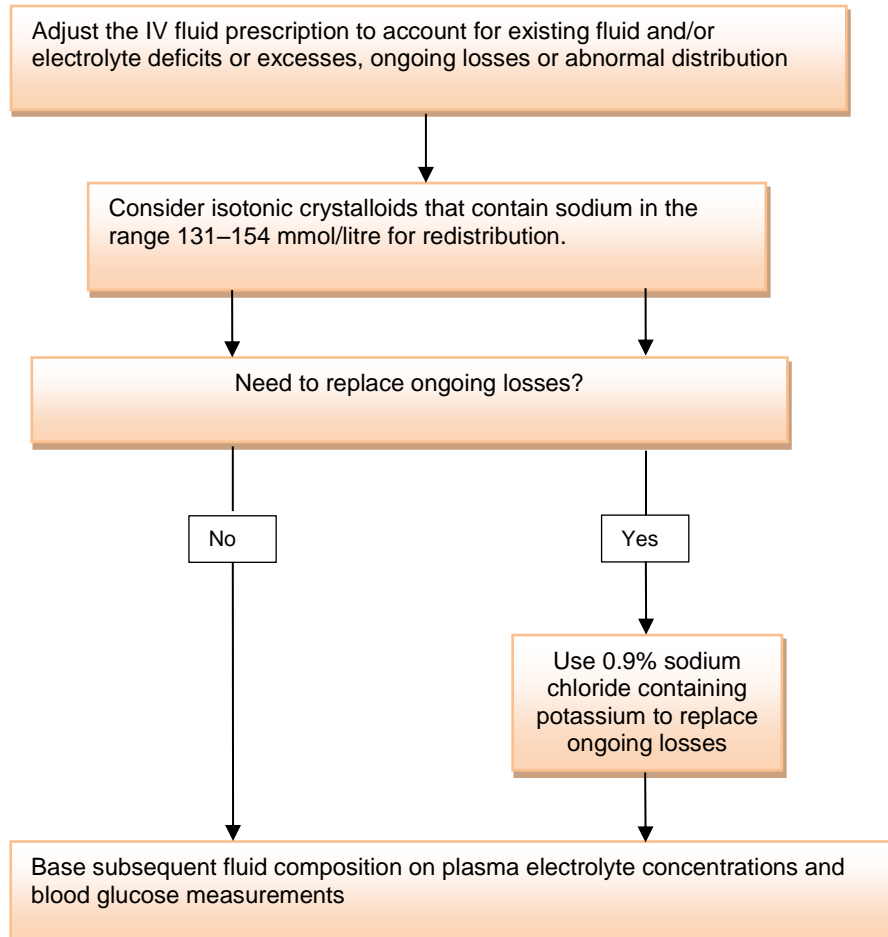


## Algorithms for IV fluid therapy in children and young people in hospital



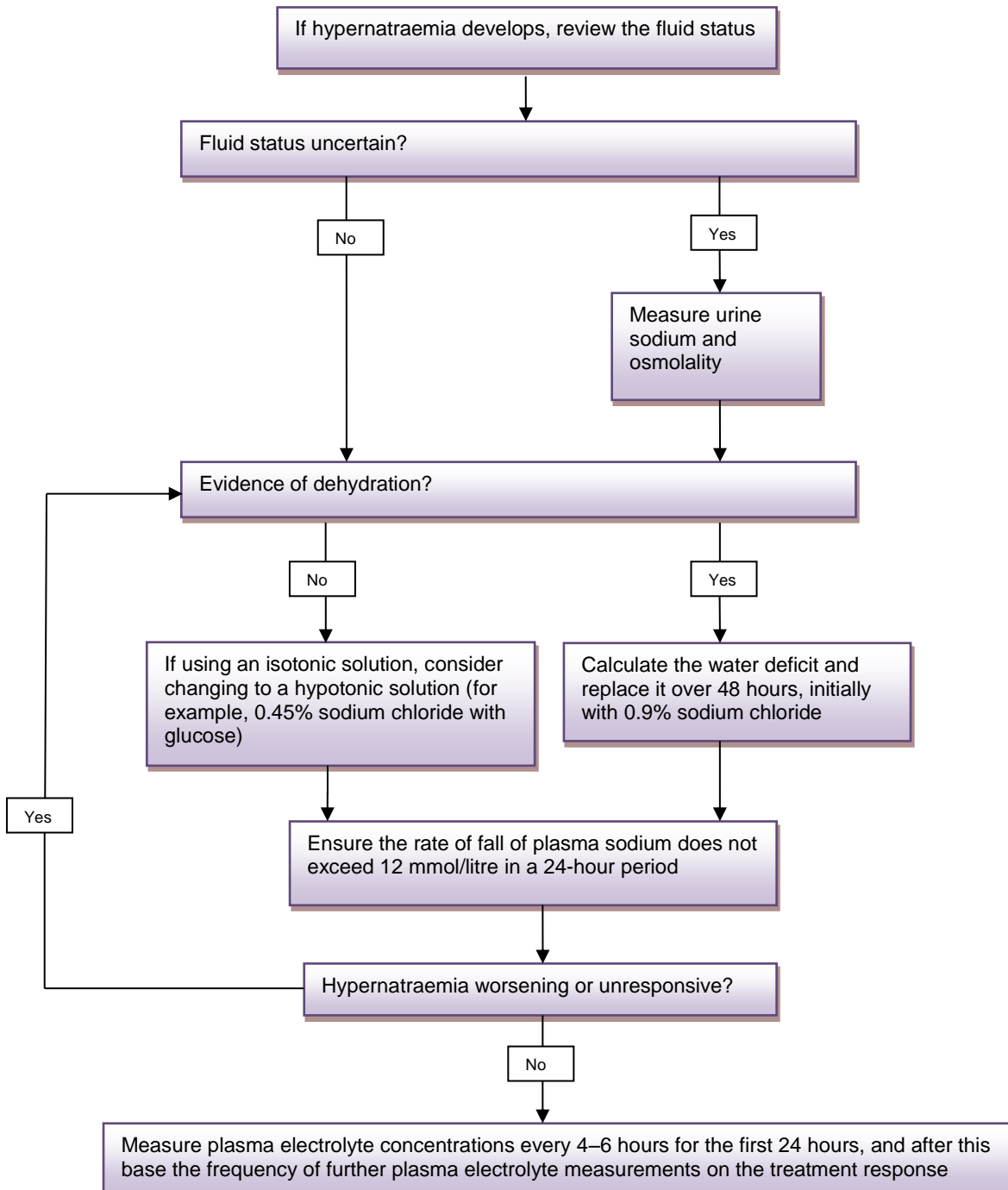
## Algorithms for IV fluid therapy in children and young people in hospital

### Algorithm 4: Replacement and redistribution



## Algorithms for IV fluid therapy in children and young people in hospital

### Algorithm 5: Managing hypernatraemia (plasma sodium more than 145 mmol/litre) that develops during IV fluid therapy



## Algorithms for IV fluid therapy in children and young people in hospital

### Algorithm 6: Managing hyponatraemia (plasma sodium less than 135 mmol/litre) that develops during IV fluid therapy

Be aware that the following symptoms are associated with acute hyponatraemia:

- Headache.
- Nausea and vomiting.
- Confusion and disorientation.
- Irritability.
- Lethargy.
- Reduced consciousness.
- Convulsions.
- Coma.
- Apnoea.

